

OWNER'S MANUAL FOR #309 BLOWER

READ ALL INSTRUCTIONS BEFORE USING BLOWER

IMPORTANT: Unpack blower immediately and check for damage to shipping. Place any damage claim with delivering carrier, saving all packing materials for inspection. Our warranty covers **manufacturer's defects** only. DO NOT return to shipper.

File instructions for future reference and ordering replacement parts.

A WORD ABOUT YOUR BLOWER. This blower is designed to blow CELLULOSE insulation fibers, properly conditioned by agitation in the hopper. This unit is not designed to blow fiberglass, mineral wool, or similar abrasive material, which would cause damage to fan and chamber. Consult the manufacturer for a wide range of machines designed to handle all fibers.

Declaration of Incorporation -The 309 blower's intended use is with cellulose machines and is an integral part of the machine's operation. The blower is not intended to be used as a separate piece of equipment as this would create an unsatisfactory condition. The assembler performing final assembly of blower unit must ensure proper installation to make certain that final health and safety requirements have been met.

Your blower is designed with an abrasive resistant fan and chamber, powered by a high speed, universal, brush-type motor.

#309
16.8 amp Motor, 120V
(8.4 amp, 230V)
1.5 h.p. Motor
No load RPM 16,500
2016 Watts

	CHAMBER	FAN DIAMETER	PRODUCTION	AMPS	
SMALL	9"	6 ½"	800 lbs/hr	12	Chamber Outlet: 2" or 2 ½"
MEDIUM	10"	7 ½"	1000 lbs/hr	15	Blower Intake: 2-3/8" Fan bore: 9/16"

LIMITED WARRANTY

This model carries a one (1) year warranty against defects in material and workmanship from date of invoice to the original purchaser. If blower needs service during that time, call your supplier immediately. Do not attempt to service blower as this would void warranty.

This warranty does not cover ordinary wear, which occurs during normal use of the machine. Materials such as fiberglass and mineral wool, etc. because of their abrasiveness, are not recommended for use with this blower.

This warranty does not cover damage to unit caused by **heat** (i.e armature, field coil). In most cases, heat damage is a result of improper use. See operating instructions.

The warranty also excludes switches and cords – the use or abuse of which cannot be controlled.

The warranty also excludes damage or breakage due to carelessness, accidents, or improper use.

We do not assume responsibility for repairs made or attempted by unauthorized persons. Returns, in-warranty, must be sent to our factory for examination and determination of the defect.

All blowers or parts must be returned prepaid with necessary information as to date of purchase, model, and serial number with description of the problem and defect.

WARRANTY EXTENDED ONLY TO ORIGINAL PURCHASER**WARRANTY AND RETURNED GOODS PROCEDURES:**

When returning blower to the manufacturer for repair, first obtain a return goods authorization number (RGA#), and you will be given shipping instructions. All blowers or parts must be returned prepaid with necessary information as to date of purchase, model, and serial number with description of the problem and defect. The blower must be shipped PREPAID to:

Krendl Machine Co.
1201 Spencerville Ave.
Delphos, OH 45833 USA
Phone: 419-692-3060
Fax: 419-695-9301
www.krendlmachine.com
krendl@krendlmachine.com

IF BLOWER WAS NOT PURCHASED DIRECTLY FROM KREN DL MACHINE CO., CONTACT YOUR SUPPLIER.

Once blower is received, it will be inspected. In-warranty blowers will be repaired and returned immediately. Estimates of repair and charges will be provided for out-of-warranty units.

**CAUTION/SAFETY: FAILURE TO OBSERVE WARNINGS BELOW MAY RESULT IN DANGER TO OPERATOR.**

- Never operate blower unless properly and securely mounted to machine. Strong suction can pull fingers or clothing into dangerous blades. Blower connects to insulation machine by a twist-lock adapter, 2-3/8".
- Ground properly with a three-wire cord in a grounded electrical outlet.
- Keep away from moisture.
- Do not operate when flammable and/or explosive vapors or dust are present.
- Disconnect cord from electrical outlet before attempting any electrical or mechanical service.
- Authorized personnel must perform electrical service.

**OPERATING INSTRUCTIONS: READ ALL INSTRUCTIONS BEFORE YOU BEGIN.**

- A. This blower is an integral part of a cellulose blowing system. Connect blower to the insulation machine using the twist-lock adapter provided on the base of the machine. In many cases, the blower electrical connection will be through a remote control unit. Plug blower into receptacle marked "blower outlet". The blower will have an on-off switch, governed by the remote control unit; it cannot control blower unless blower switch is in "on" position.
- B. Connect insulation hose directly to the blower outlet with appropriate size hose and hose clamp.

- C. Make sure you have adequate electrical supply. **LOW VOLTAGE WILL CAUSE BLOWER TO OVERHEAT AND DAMAGE MOTOR. THIS VOIDS WARRANTY.**
- D. Keep insulation material from obstructing the cooling of motor.
- E. Use only DRY cellulose. Wet or damp material causes binding inside blower chamber and **WILL OVERHEAT AND DAMAGE MOTOR. THIS VOIDS WARRANTY.**
- F. If insulation hose or blower is clogged, turn blower off immediately, as continued operation **WILL CAUSE BLOWER TO OVERHEAT AND DAMAGE MOTOR. THIS VOIDS WARRANTY.**



MAINTENANCE.

THIS BLOWER IS BACKED BY A ONE (1) YEAR WARRANTY AGAINST MANUFACTURER'S DEFECTS. If blower needs service during that time, call your supplier immediately. Do not attempt to service blower, as this would void warranty.

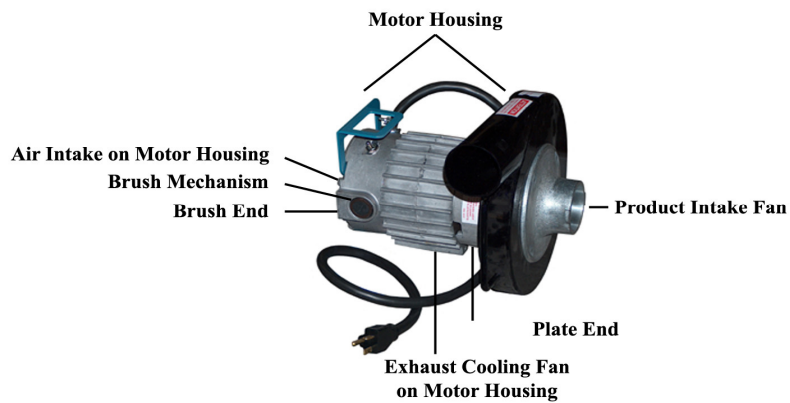
The manufacturer recommends that all repairs be made at its own factory authorized service center. Blower repair done by the manufacturer is warranted for 90 days on repair parts and workmanship.

If you choose to have repairs made elsewhere, replacement parts are offered that have been carefully inspected to insure they meet the specifications of the original part. Any disassembly and reassembly of the unit to replace the defective part must be done with care to insure proper fit and alignment. No warranty consideration will be extended on parts incorrectly installed or mishandled. All units should be run for approximately 15 minutes, prior to assembly of fan and chamber, to insure proper brush seating and alignment. All questions regarding replacement of parts should be directed back to the factory.



REGULAR BLOWER MAINTENANCE WILL EXTEND LIFE OF THE BLOWER.

- A. Always disconnect electrical power before making inspection or repairs. Quarterly inspection of the felt washers located under endplate is necessary to check for wear. Failure to do so will result in bearing failure. Daily blow out exhaust cooling fan and air intake fan on motor housing with compressed air to ensure bearing armature life.
- B. Keep blower clean. Check for accumulation of materials or debris on fan blades. Make sure all material is blown out of blower at end of workday. Weekly inspect the intake fan for bent or worn blades.
- C. Keep motor clear of material for proper flow of cooling air.
- D. Replace carbon brushes when worn to 1/2" in length. Loosen brush plug (item #20), and remove the carbon brush (item #21). There are two carbon brushes on motor. Replace by inserting new brush in same direction. Attach brush plug. Use only Krendl carbon brushes. These brushes are manufactured specifically for this motor. Do not use substitute brushes as serious damage to the motor can be caused and **VOID WARRANTY.**



TROUBLESHOOTING.

IMPORTANT: If there is excessive noise, vibration, arcing of brushes, or other symptoms of trouble, STOP BLOWER IMMEDIATELY AND UNPLUG. Contact your supplier or qualified motor repair service before making inspection or repairs.

SYMPTOM	CAUSE	SOLUTION
Blower does not run.	Blower switch in “off” Position.	Turn to “on” position.
	Remote control malfunctioning.	Refer to insulation machine instructions. Connect directly to power cord.
	Blower unplugged.	Check all power connections.
	Debris accumulated on brush assembly.	Check to see if carbon brush is making contact with the commutator. Blow out area and keep clean.
Blower overheating/high amperage.	Low voltage.	Check length and gauge of extension cord.
	Material build-up.	Clean excessive material from fan chamber by scraping and blowing out area. Remove material from around motor.
	Bearing failure.	Contact your supplier or qualified motor repair service.
	Wet or damp material.	Replace with dry.
Excessive arcing.	Worn, sticking, improperly seated or damaged brushes.	Replace brushes.

Excessive vibration.

Fan imbalance.

Clean material build-up.
Inspect fan for broken blades.

Bearing failure.

Contact your supplier or
qualified motor repair service.

KRENDL MACHINE COMPANY

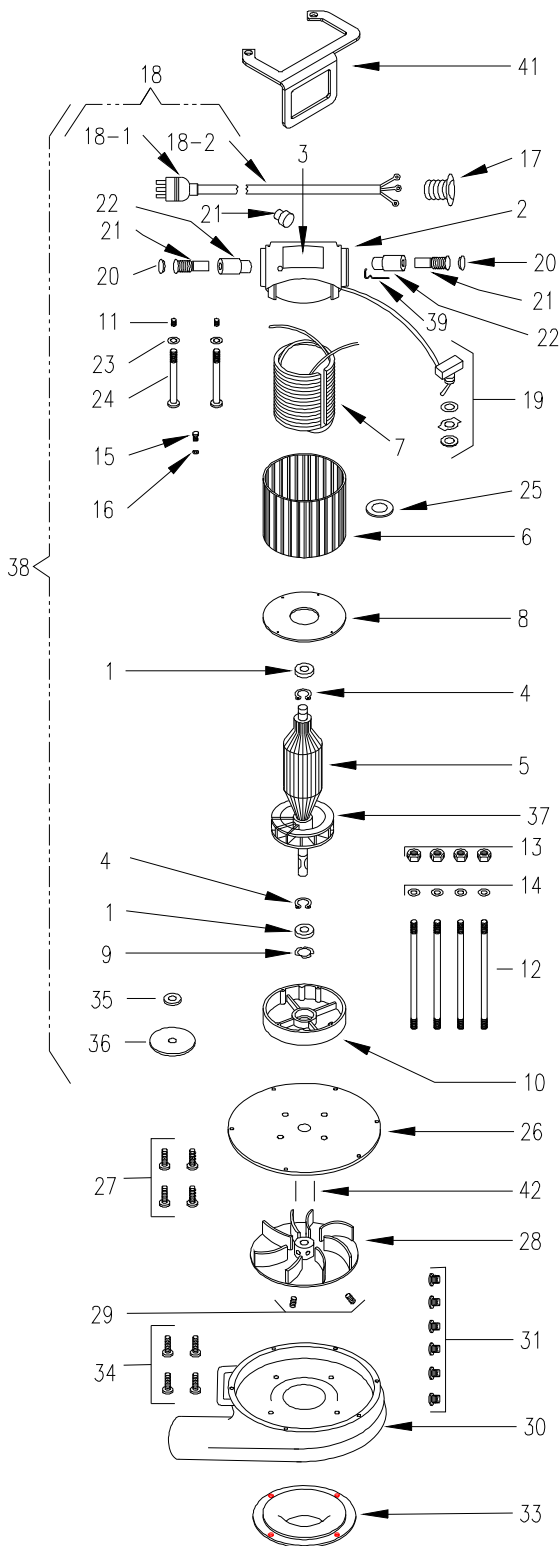
May 2010

1201 Spencerville Avenue Delphos, Ohio 45833 U.S.A
 Phone: 419-692-3060 Fax: 419-695-9301 E-mail: krendl@krendlmachine.com

PARTS LIST NO. 309 KRENDL BLOWER - 16 AMP. 1 1/2 H.P.

SHAFT DIAMETER 9/16"

CYLINDER 3 1/2" LONG



DUMORE PART NO.	ITEM	OUR PART NO.	DESCRIPTION	QUAN.
426-0285	1	KBL-001	BEARING, BALL	2
589-0495	2	KBL-002	HOUSING, BR. END	1
643-1105	3	KBL-003-309	NAME PLATE	1
R-686-0213	4	KBL-004	RETAINING RING	2
408-0805	5	KBL-005-309-A	ARMATURE ASSY (120V)	1
408-0805	5	KBL-005-309-B	ARMATURE ASSY (230V)	1
527-0042	6	KBL-006-309	CYLINDER	1
548-0747	7	KBL-007-309-A	FIELD ASSY (120V)	1
548-0553	7	KBL-007-309-B	FIELD ASSY (230V)	1
414-0044	8	KBL-008	BAFFLE	1
734-0086	9	KBL-009	FLAT SPRING	1
599-0331	10	KBL-010	HOUSING, PL. END	1
822-1213	11	KBL-011	SET SCREW, 10-32	2
746-0098	12	KBL-012-309	STUD	4
R-645-0014	13	KBL-013	NUT, 1/4-20 UNC	4
R-769-0010	14	KBL-014	WASHER, INT. LOCK	4
868-0509	15	KBL-015	SCREW, GROUND	1
R-769-0003	16	KBL-016	WASHER, INT. LOCK	1
510-0056	17	141	CORD CLAMP, 3/8"	1
517-0257	18	KBL-018	CORD ASSY.	1
	18-1	KBL-PLUG	PLUG (5-20P)	1
	18-2	KBL-CORD	CORD 14-3S-JX x 44" (CORD ONLY)	1
751-0139	19	KBL-019	SWITCH ASSY	1
R-456-0115	20	KBL-020	BRUSH PLUG	2
R-457-0827	21	KBL-021	BRUSH ASSY	2
451-0082	22	KBL-022	BRUSH HOLDER	2
R-769-0011	23	FW002	#10 LOCKWASHER-INT TOOTH	2
819-3313	24	KBL-024-309	SCREW, 10-32 X 2 3/4"	2
	24	KBL-024-309-A	SCREW, 10-24 (OLD STYLE)	2
687-0028	25	KBL-025	RING, LOCKING	1
	26	KBL-026-A	END PLATE (SMALL)	1
	26	KBL-026-B	END PLATE (MEDIUM)	1
	26	KBL-026-M	END PLATE, CAST ALUM	1
28062	27	FSB016	SCREWS, F/END PLATE	4
	28	KBL-028-A-AL	FAN, SMALL, ALUM	1
	28	KBL-028-A-STL	FAN, SMALL, STEEL	1
	28	KBL-028-B-AL	FAN, MED, ALUM	1
	28	KBL-028-B-STL	FAN, MED, STEEL	1
81985	29	FSB028	SET SCREWS, F/FAN	2
	30	KBL-030-A-2	CHAMBER, FAN, SMALL, 2"	1
	30	KBL-030-A-2.5	CHAMBER, FAN, SMALL, 2 1/2"	1
	30	KBL-030-B-2	CHAMBER, FAN, MED, 2"	1
	30	KBL-030-B-2.5	CHAMBER, FAN, MED, 2 1/2"	1
27542	31	FSB009	SCREWS, F/FAN CHAMBER	6
	33	KBL-033	ADAPTER, ZINC (F/STL FAN CHMB)	1
28062	34	FSB016	SCREWS, F/ZINC ADAPTER	4
	35	KBL-035	WASHER, SMALL FELT	1
	36	KBL-036	WASHER, LARGE FELT	1
	37	KBL-037	VENT FAN	1
541-0053	38	KBL-038-309-A	MOTOR ONLY, 120V.	1
3221-210	38	KBL-038-309-B	MOTOR ONLY, 230V.	1
449-0035	39	KBL-039	CLIP, BRUSH F/FIELD (309/310)	1
535-0110	40	KBL-040	CIRCUIT BREAKER 17.5A	1
CDM-8	40	KBL-040-B	CIRCUIT BREAKER 8A. 220V	1
	41	KBL-042	SWITCH GUARD	1
64091	42	KBL-PIN	CHOPPER PIN	1

NO WARRANTY ON NEW MOTORS INSTALLED BY CUSTOMER

NOTE: All prices are subject to change without notice.

All prices are F.O.B., Delphos, Ohio - U.S.A.