

KRENDL

KS-260 WALL SPRAY SYSTEM



KRENDL MACHINE COMPANY

1201 Spencerville Ave. Delphos, Ohio 45833

Telephone 419-692-3060 Fax 419-695-9301

E-mail: krendl@krendlmachine.com

Web Site: www.krendlmachine.com



KS260 - Dry Machine & Blower



Well over two years of research and development has gone into the creation of the KS260 wall spray system. This has resulted in a finished product that is more streamlined, efficient and economical.

Key components of the KS260 are the dry machine and blower system. This module can be utilized as either an open blow unit for attics or in combination with the recycle and vacuum for wall spray application. This is conveniently located towards the front of the truck which allows easier and more efficient loading of material.

Information in the table below provides features of the new KS260 wall spray system.

DRY MACHINE & BLOWER FEATURES

Large Hopper Capacity	Approx. 73 cu. ft.	16 bags of cellulose
Repositioned Dry Machine		Easier loading
Increased Airlock Capacity	14" x 14" w/4" output	4200 lbs./hr.
Slide Out Airlock		Makes changing seals simple
Indicator Gauge on Slidegate		Precise metering & control of fiber
#50 Nickel Plated Chain on Drive Unit	3 HP motor/reducer	Eliminates breakage and slipping
Filter Box System	Filter Bag	Virtually dust free environment
Stainless Steel Agitators	1 1/4" dia. shafts 3/16" x 2" square tips	Eliminates corrosion Maximum conditioning & coverage
10 HP Blower System	250 CFM of air	6 lbs. of pressure



KS260 - Recycle Machine & Vacuum



Additional elements of this innovative system are the recycle machine and vacuum system. This essential part of the wall spray process allows greater efficiency while using less man hours. Conveniently located in the back of the truck, this feature eliminates elbows in the air stream providing more efficient air movement and increased pressure to the product.

The table below details the updated features integrated into this new KS260 wall spray system.

RECYCLE MACHINE & VACUUM FEATURES

Large Recycle Storage Capacity	Approx. 25 cu. ft.	Repositioned at rear of truck
Deluxe Electrical Control Box	Safety pre-alarm system	Easy access from ground level
Round Design Canister	Perforated metal screens	Slide out for easy cleaning
Slide Out Airlock		Makes changing seals simple
Indicator Gauge on Slidegate		Precise metering & control of fiber
#50 Nickel Plated Chain on Drive Unit	2 HP drive motor	Eliminates breakage and slipping
15 HP Vacuum System	16" dia. impeller	4" input tube
Stainless Steel Vertical Agitator		Eliminates corrosion Maximum conditioning & coverage
Bin Level Indicator		Shuts off vacuum when recycle hopper is full

KS-2 WALL SPRAY

The Future



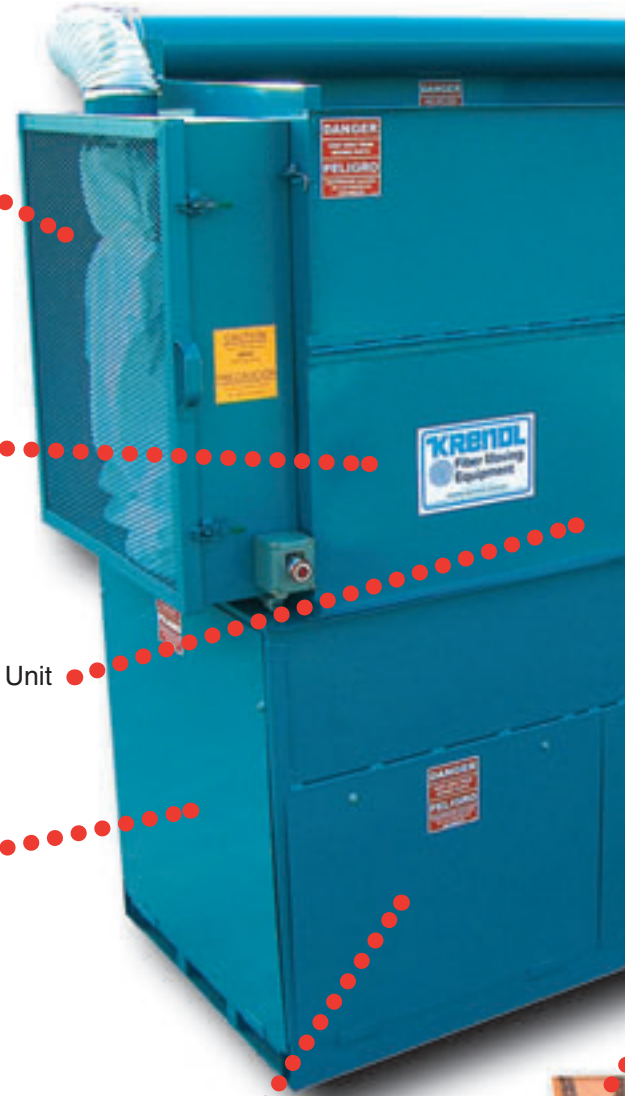
Filter Bag

Filterbox system with removable filter bag.

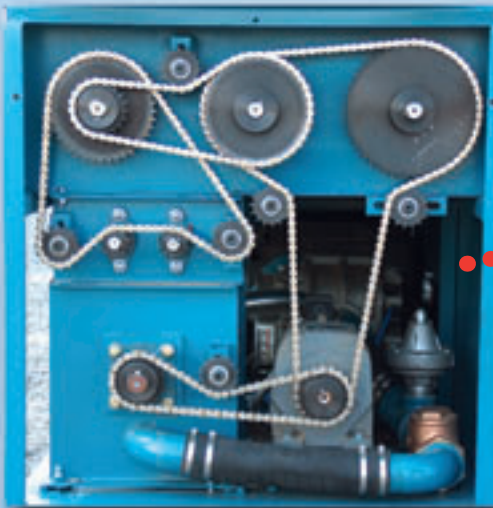


New design stainless steel agitator system.

Dry Hopper Unit



KRBNL
Filter Wearing
Equipment

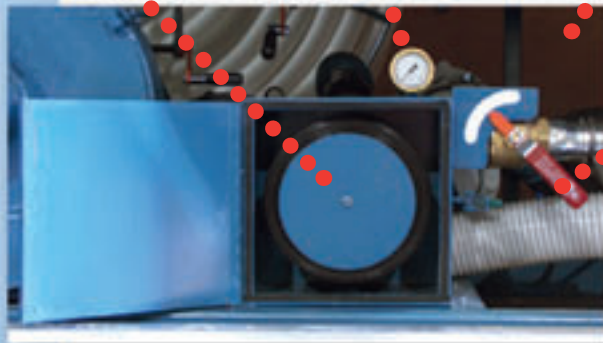


Drive system 3 HP motor/reducer.
#50 nickel plated chain and
hardened tooth sprockets.

Air Filter

Pressure Gauge

Air Bypass Valve



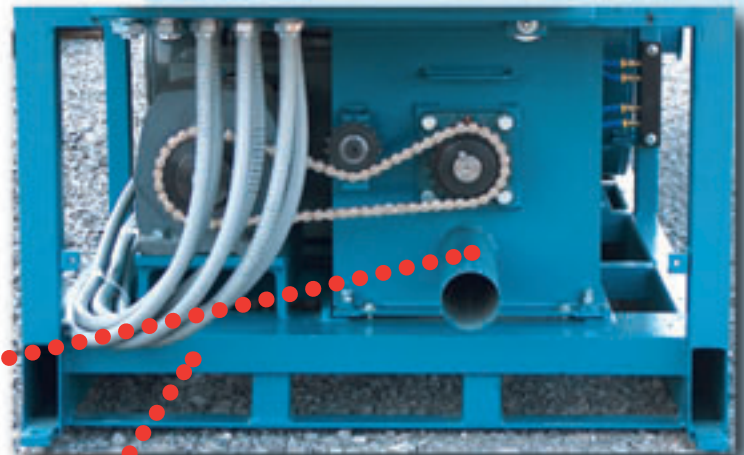
Check Valve

260 AY SYSTEM

re is Now...



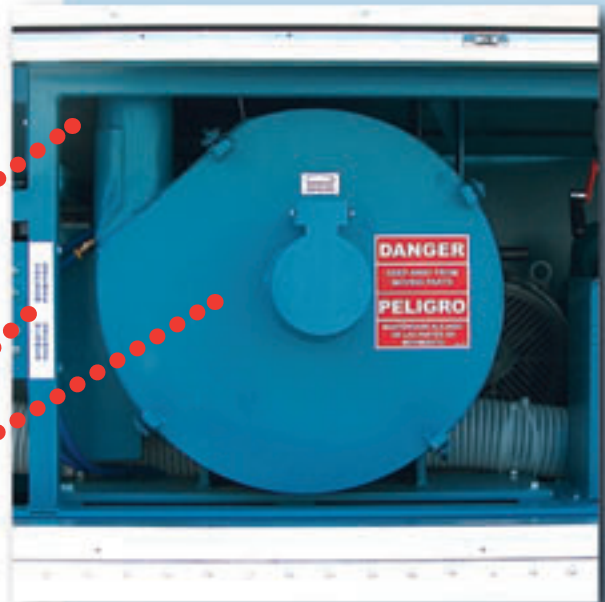
Weight: 3345 lbs.
Machine Dimensions:
39"W x 137"D x 84"H



Airlock

Newly designed removable airlock.

Recycle Hopper Unit



Grease Zerks

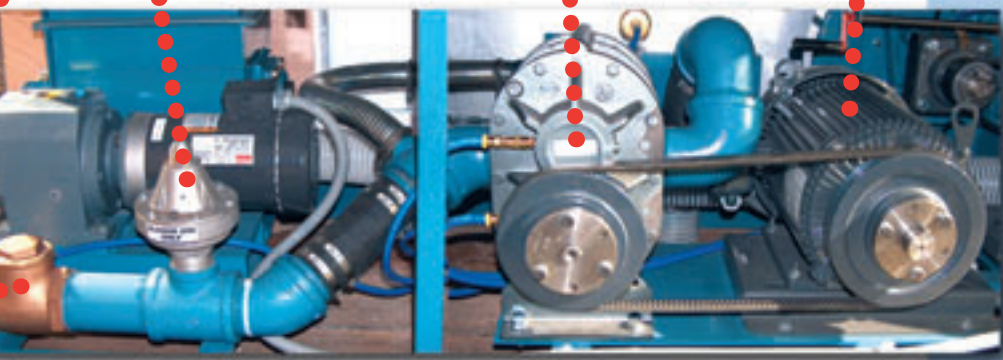
15 HP Vacuum

Grease Zerks and 15 HP Vacuum

Pressure Relief Valve

P. D. Blower

10 HP Motor



The 10 HP blower system allowing 6 lbs of pressure with 250CFM of air.





Water Tank System



Water tank as seen inside of van body

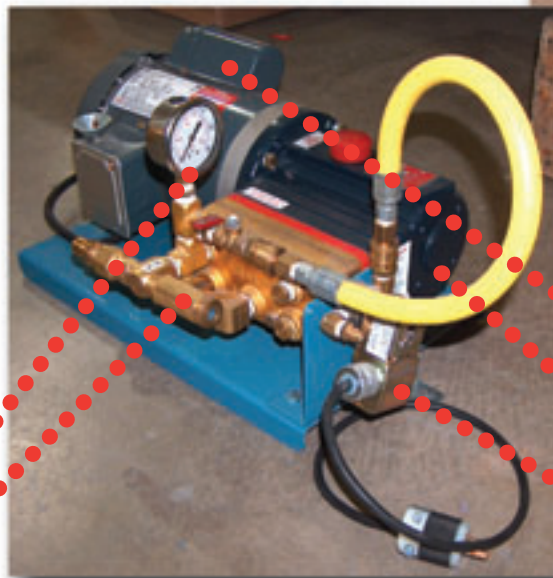
- Insulated steel panel construction surrounds a 230 gallon tank. An insulated door makes the pump cabinet accessible externally on the passenger side of the truck. An overflow tube releases air pressure from the tank while it is being filled and acts as a water overflow once the tank is full.
- Water Tank is mounted against the front of the truck and is approximately 86" in length x 32 1/2" in depth x 47 1/2" in height.
- System is provided with 200 feet of industrial type spray hose on hose reel.
- M-03 Wanner water pump is fitted inside the insulated pump cabinet. The intake line from the water pump to the water

tank has a clear bowl filter with 80-mesh screen to filter incoming water from tank. The return line that goes back into the tank and the intake line both have a quick coupler in-line for easy disconnect. There is also a valve on each line to allow the water from the tank to be retained if the pump is removed.

- Additional hose with valve coming from the tank is for draining the tank and often used for washing hands and cleaning up at the end of the job.
- Submersible heater with thermostat protects the water tank in the winter. Fan-type heater mounted inside the insulated pump cabinet protects internal equipment in cold weather. Both heaters can function with or without machine operating. The heaters are powered by the generator (when operating) or by plugging an extension cord into the outside, (watertight), male plug mounted just under the exterior door of the pump cabinet. Together they draw less than 15 amps.



200' Hose & Hose Reel



Pressure Gauge
Pressure Regulator

Pump cabinet access
Motor
Pump
IWS Solenoid

M-03 pump & motor



Power System (Generator Set)

- A 60KW, 480VAC diesel powered generator at the rear of the truck provides power for the KS260 Wall Spray System and accessories. The diesel power plant is plumbed into the diesel fuel tanks on the truck chassis.
- This unit is designed to take in air for cooling from the bottom and side and vent it out the radiator. The radiator faces the back of the truck so that any dust from the truck is blown away from the truck and not sucked back into the radiator.
- A generator enclosure is provided to protect the unit from dust. An access panel, located on top of the generator enclosure provides access to the radiator fill cap.
- Louvered side door, with lock, provides easy access to the oil drain, oil filter, fuel filter, air filter, and oil fill when maintaining and cleaning engine. This side door can be opened when operating during hot weather to allow for more air to cool engine and generator.



Power System (PTO – Power Take Off)



- A 60KW, 480VAC generator located in the front of the water tank system, under a removable enclosure, provides power for the KS260 Wall Spray System and accessories.
- An easily removable enclosure provides access to the belt and pulley to check for proper alignment, tensioning and belt replacement.
- An electrically powered ventilation system draws in clean outside air to cool the generator.
- The power take off bearings and grease fittings are easily accessible from underneath the truck.

Basic KS260 Equipment:

- Dry Hopper – 16 bag (73 cu.ft. capacity)
- Recycle Hopper – (25 cu. ft. capacity)
- Filter box system – Makes for a dust free environment inside the truck
- 10 HP Blower System – Located under dry hopper
- 15 HP Vacuum System – Located inside truck for easy maintenance
- 60KW Generator Set – 100 HP Diesel Engine w/60KW Generator
(Generator base and cover totally sealed from inside truck)

OR

- 60KW PTO (Power Take Off) – 60KW Generator
(Powered by transmission with enclosure)

Optional Equipment: (necessary to complete above system)

- 230 Gallon Stainless Steel Water Tank – Completely plumbed with insulated enclosure
- 27" Wall Scrubber – Parallel handle w/30" extension
- 36" Hose Reel for 3" Blower Hose (Genset System)
- 44" Hose Reel for 4" Vacuum Hose (Genset System)
- 90" Hose Reel for 4" Vacuum Hose & 3" Blower Hose (PTO System)
- 4 Foot Long Vacuum Wand
- Toolbox – 60" x 24" x 24" (mounted under truck chassis)
- Wireless Remote System
- 150' of 4" Vacuum Hose – Three 50' sections
- 150' of 3" Blower Hose – Three 50' sections
- Internal Wetting System – 367C-5C Connector Tube Assy, 5" (w/tips)
(sold w/10 ft. of 4" hose, 10ft. of 5" hose, 5" to 4" Reducer)
- 4" Diameter Connector Tube 5" long – Two for 150' vacuum hose
- 3" Diameter Connector Tube 5" long – Two for 150' blower hose
- 12' of 2 1/2" light weight flexible hose to attach wall cavity nozzle to 3" blower hose
- 3" to 2 1/2" Reducer connects 2 1/2" hose to 3" hose for wall cavity spray
- 2 1/2" Wall Spray Nozzle
 - Wall Spray Tips - (2502) - (two)
 - Wall Spray Tips - (25015) - (two)

Door Kits:

- 23" x 72" Non Insulated – Access door to equipment from outside the truck
- 18" x 45" Insulated – Access door to water system from outside the truck
- 36" x 48" Louvered – Access door to generator from outside the truck (not included w/PTO)

Installation:

All equipment must be installed by Krendl Machine Company

